

# Staples, MN Area

TRACTORS, CASE IH COMBINE, VEHICLES, FARM, TILLAGE & CONSTRUCTION EQUIPMENT, TRUCKS AND GRAIN TRAILER

Live and Online Bidding

Very few small items. Please be on time.

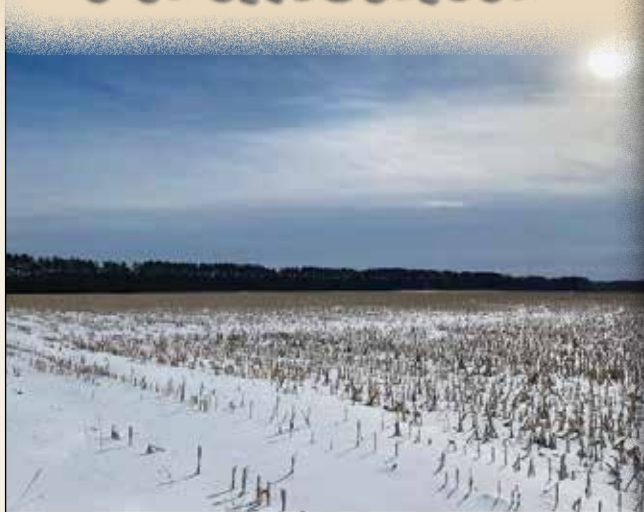
# AUCTION

Auction to be held at 26484 Co. Rd. 2 (Co. Rd. 2 Storage Facility), Northwest edge of Staples, MN 56479. (Watch for auction signs.)

## Saturday, March 20, 2021

**SALE TIME:**  
10:30 A.M.

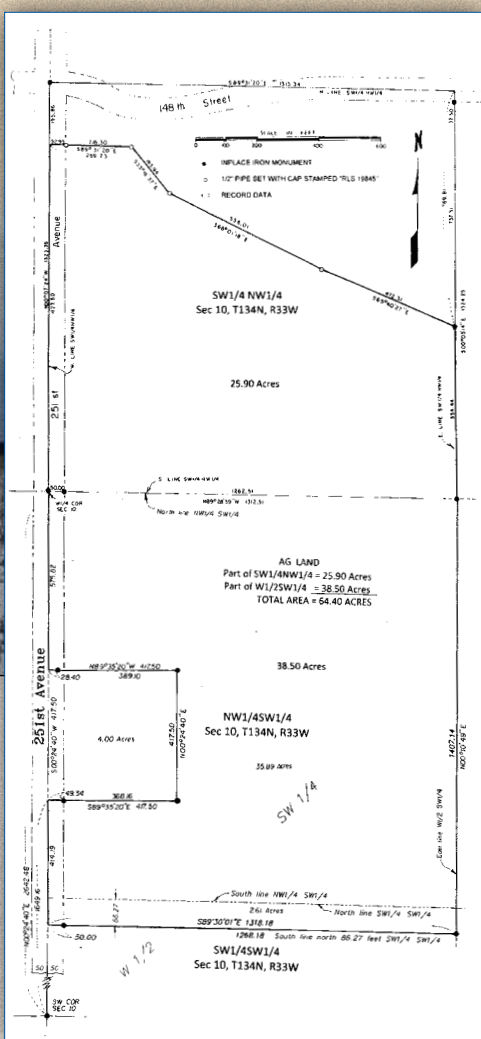
## 64.40 Acres of Prime Wadena Co. Farmland



Located in Section 10, Thomastown Twp, Range 33, Wadena Co.

There is also tar road access.

**Land Auction Terms:** \$10,000.00 Down Non-Refundable Check will be due immediately following the auction and at the signing of the purchase agreement. Buyer's Premium will apply to farmland only. Possession will be granted at closing. Closing will be on or before Thursday, April 22nd 2021. Elite Title & Escrow, Corp. Address: 121 4th St. NE, Staples, MN 56479 (218) 541-5120 to handle the closing on the seller's behalf.



### COMBINE, HEADS, SWATHER, & GRAIN CART

- 1995 Case IH 2188 2WD Combine, 30.5L-32 Rice & Cane Fronts, New 14.9-24 Rears, 5975/4131 Hours Showing, Maurer Ext, F/A, AHC, AFS Yield & Amp; Moisture Monitor, SN- JJC190093, Serviced by Arnold's pre-harvest 2020, Approx 220 Acres with Approx \$30,000 Spent on Machine
- 1996 Case IH 1083 8R30" Corn Head, SN- JJC0154103
- JD 643 6R30" Corn Head, Powershafts, SN- 2831938, 15 Acres on Rebuild
- 1991 Case IH 1020 Flexhead, 22.5', Manual F/A, SN- JJC0084162
- Combine Head Adapter, Case IH Combine to JD Head
- KillBros UT125 4-Wheel Head Trailer, Ext Pole, Small Tire, for up to 35' Heads
- Model 2030 4-Wheel Head Trailer, for up to 20' Heads
- J-Craft Grain Cart, Approx 600 Bu, 12" Auger, 1 1/2" 1000 PTO, 23.1-26 Diamond Tread Tires, SN- G082022
- IH 210 Swather, SP, 14' Draper Head, Bat Reel, Crop Lifters, Dual Drive Wheels, IH Gas Engine, Always Shedded



Land sells first at 10:30 a.m. and then Equipment sells approx. 11:00.

Due to Shane's job in Arizona, he will be discontinuing his farming operation and selling his farm land and farm equipment by public auction. Very few small items. Buyers please be on time. Loading will be available on auction day, please be prepared to load-out. No drive-on inspections at this time. Inspections will be welcomed the week of the auction. Thank you!

### FARM EQUIPMENT

- JD 7000 8R30" Planter, Corn Fingers, JD Radial Bean Meters, Markers, (2) 120 Gal Liquid Fert Tanks, DJ3-S8 Monitor, Approx 120 acres on new disk openers
- IH 6R30" Planter, Corn Plates, Dry Fert, New Jack, no cyl, needs work
- 16' Tebben Smooth Drum Land Roller, Transport
- 16' Tebben Spike Drum Land Roller, Transport
- Hiniker Stalk Chopper, 14', PT, 1 3/8" 1000 CV PTO, (4) Rear Wheels, no hyd cyl
- Artsway Stalk Chopper, 20' PT, (4) Rear Wheels, 1 3/8" 1000 PTO, needs work, center bearing is out
- Hiniker Coulter Chisel, PT, 16', (13) Shank, 3" Reversible Twist Points
- WilRich Field Cult, Approx 36', 3 Bar Harrow, Walking Tandems on Mainframe and Wings
- Alloway RTS3300 Field Cult, Approx 35', Danish Shank, 3 Bar Harrow, Walking Tandems on Mainframe and Wings, (2) Gauge Wheels
- IH 45 Vibrashank Field Cult, 24', PT, Wingfold, Walking Tandems on Mainframe, New Shovels
- JD 2800 8 Bottom On Land Plow, AR, Hyd Vari-Width, Semi Int, (8) Coulters
- JD 2800 6 Bottom On Land Plow, AR, Hyd Vari-Width, Semi Int, (6) Coulters
- IH 710 5-18" Plow, Semi Int, AR, (1) Coulter, new lays
- Misc Wheels & Tires



### PICKUP, TRUCKS & TRAILERS

- 2019 Ram 3500HD Tradesman 4x4 Pickup, 6.4L Gas, 4 Door, Rear Camera, Chrome Wheels, 5th Wheel Hitch, Receiver, Tow Package, PW/PL, Cloth, Tonneau Cover, 5 1/2' Box, Full Length Step Boards, Tow Hooks, Hood Deflector, 23,154 Miles Showing
- 1985 GMC Sierra 3500 1 Ton Dually, 2WD, 350 Engine, 4 Speed Manual Trans, 94"x12' Landscape Box, Hoist, AutoCrane Manual Crane, Alum Running Boards, Vinyl Seat, 55,174 Actual Miles, Recent New Tires, Brakes, Fuel Tank, Brakes need work
- 1978 Mack RS600L Grain Truck, Tandem Axle, Mack 350 Engine, 5+4 2 Stick Trans, Mack Spring Ride Susp, 102"x20"x50" Box, 3pc Endgate, Shurco Roll Tarp, Hoist, 13/80R20 Fronts, 11R22.5 Rears on Spokes, Air Brakes, Mud Scrapers



- 2006 Maurer Hopper Trailer, 36', Steel, Spring Ride, LoPro 24.5 on Steel, Side Windows, Recent New Roll Tarp
- Wolverine Alum Tandem Axle Trailer, 84"x22', 20' Wood Deck, 2' Beaver, Alum Ramps, Alum Wheels, Spare Tire, 5000# Axles
- 2009 Approx. 18' Interstate Thunder Road Cargo Trailer, Rear Fold-Down Ramp Door, Side Service Door
- JD 201 Imp Trailer, 8"x28', Square Tube, Good Wheel Locks, Deck Plank, & Tires



### CAT D6D DOZER



CAT D6D Dozer for parts or repair, SN- 4X5756. Will be sold on semi trailer for local transport. Call Jim Lund at (218) 821-9538.

### TRACTORS

- Case 2390 2WD Tractor, 4x3 PS, 2 Hyd, Diff Lock, 3Pt, 18.4-38 Band Duals, 3Pt needs service
- 1975 Case 1370 Tractor, 4x3 PS, 2 Hyd, 3Pt, 1 1/2" 1000 PTO, New Inside 20.8R38 Rears, Band Duals, 14L-16.1 Fronts, Tilt-O-Matic Rockbox, 5567 Hours Showing, SN- 8780689
- 1978 Allis Chalmers 7045 Tractor, Power Director Trans, 540 PTO, 2 Hyd, 3Pt, no top link, 18.4-38 Rear Band Duals, 11.00-16 Fronts, Tilt-O-Matic Rockbox, SN- 70451971, fresh service, needs radiator, stuck in low range



### LAWN & YARD

- Husqvarna P-ZT6126 Zero Turn Lawn Mower, 61" Deck, Bagger, 26 HP, Rollbar, (2) Front Weights, 468 Hours Showing
- Husqvarna LGT54DLX Lawn Tractor, 54" Clear Cut Deck, Bagger, Hydro, 40.4 Hours Showing
- Cub Cadet LT1045 Lawn Tractor, Hydro, 20 HP, 46" Deck
- Tebben Yard Drag, 8', 3Pt, never used



# Shane Madsen, owner

Auction Location: 26484 Co. Rd. 2, Staples, MN 56479  
Questions: Contact Tim Litzau at (320) 583-1579



**Henslin Real Estate and Land, LLC**  
Lic. #40452768  
**Real Estate Broker,**  
Allen J. Henslin  
**Real Estate Agent,**  
Laura Posl  
LaDon Henslin 65-25

IN ASSOCIATION WITH  
**Al Wessel**  
(320) 760-2979  
**Kevin Winter**  
(320) 760-1593  
**Jason Mueller**



[midamericanauctioninc.com](http://midamericanauctioninc.com) | [henslinauctions.com](http://henslinauctions.com)

FOLLOW US



FOR MORE PICTURES, AUCTION INFORMATION, COMPLETE LISTING, ONLINE CATALOG, & OTHER AUCTIONS VISIT US AT:

**Auction Terms:** Cash, Good bankable check, Credit cards. All items sold as-is, where-is with no warranties or guarantees of any kind. All items must be paid for at the conclusion of auction prior to removal from location. Any verbal announcement made by auctioneer will take precedence over any and all printed material. Auctioneers and their staff are not responsible for accidents. Out of area buyers please bring letter of credit. Lunch on Grounds.

Can't make it to the auction? Bid live online! powered by  
Visit: [www.proxibid.com/HenslinAuctions](http://www.proxibid.com/HenslinAuctions) proxibid